

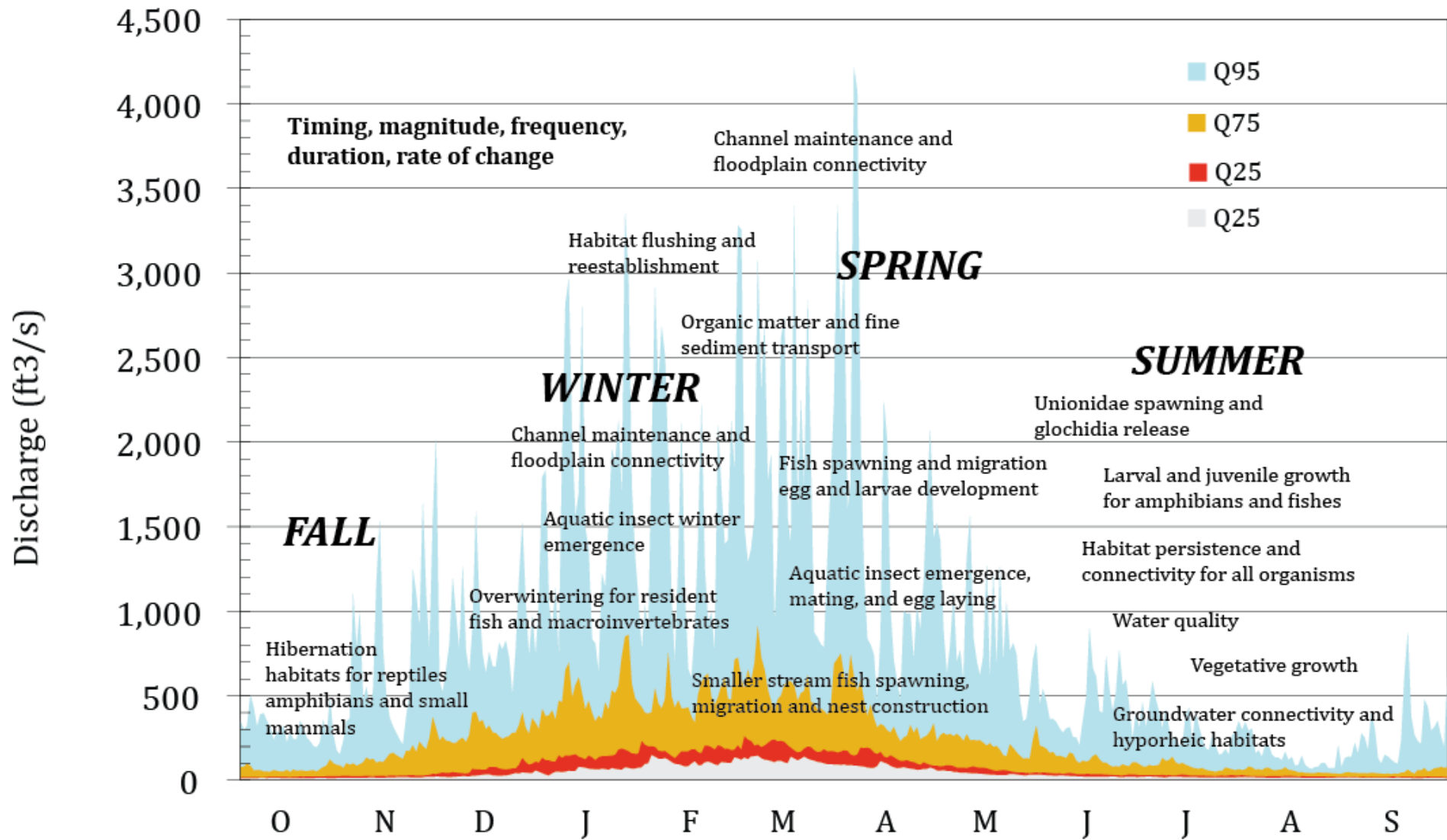
Environmental Issues of Ag Migration



Alabama Rivers Alliance
Water Is Life

Mitchell Reid, JD
Alabama Rivers Alliance
www.AlabamaRivers.org

ALABAMA WATER AGENDA
A GUIDE FOR ACHIEVING HEALTHY WATERS IN ALABAMA



Alabama Causes of Impairment for Reporting Year 2014

[Description of this table](#)

NOTE: Click on the underlined Cause of Impairment Group to see a list of specific state causes of impairment making up the Cause of Impairment Group. See also [Pollution categories summary document \(PDF\)](#) (20 pp, 557 K, [About PDF](#)) for brief, non-technical descriptions of general cause categories.

Size of Assessed Waters with Listed Causes of Impairment

Cause of Impairment Group	Rivers and Streams (Miles)	Lakes, Reservoirs, and Ponds (Acres)	Bays and Estuaries (Square Miles)	Ocean and Near Coastal (Square Miles)
Ammonia	223.2	527.3		
Flow Alteration(s)	3.2			
Mercury	915.1	40,976.9	.7	201.0
Metals (other than Mercury)	162.0		94.6	
Nutrients	585.6	165,021.1		
Organic Enrichment/Oxygen Depletion	845.4	6,904.5		
Pathogens	942.0		428.7	
Pesticides	93.8	85.7		
pH/Acidity/Caustic Conditions	33.5	1,569.2		
Polychlorinated Biphenyls (PCBs)	42.2	57,715.1		
Salinity/Total Dissolved Solids/Chlorides/Sulfates	62.9			
Sediment	1,144.5	3,052.9		
Total Toxics	11.1			
Toxic Inorganics	57.0			
Toxic Organics	44.6	20,633.1		
Turbidity	119.9			

Alabama Probable Sources Contributing to Impairments for Reporting Year 2014

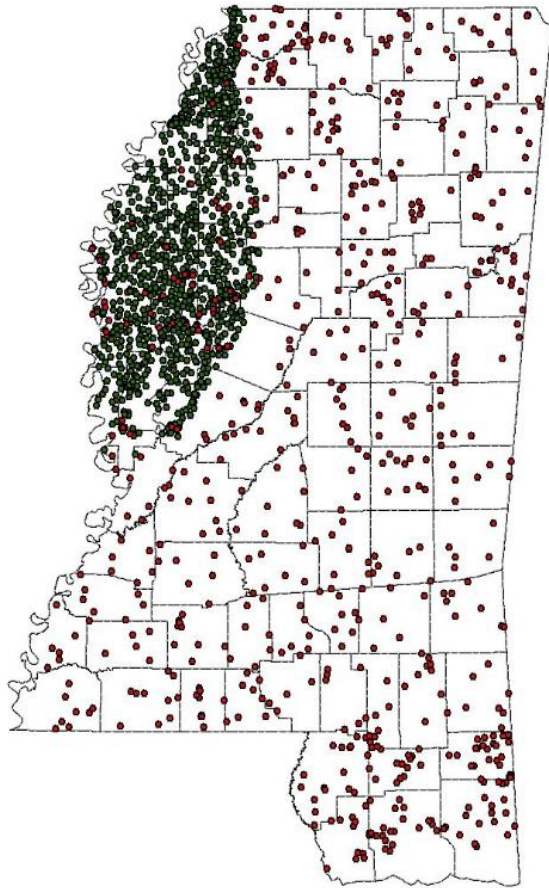
[Description of this table](#)

NOTE: Click on the underlined Probable Source Group to see a list of specific state Probable Sources making up the Probable Source Group.

Size of Assessed Waters with Probable Sources of Impairments

Probable Source Group	Rivers and Streams (Miles)	Lakes, Reservoirs, and Ponds (Acres)	Bays and Estuaries (Square Miles)	Ocean and Near Coastal (Square Miles)
Agriculture	1,393.4	93,606.1		
Aquaculture	9.0			
Atmospheric Deposition	894.7	40,891.2	.7	201.0
Construction	352.4			
Habitat Alterations (Not Directly Related To Hydromodification)	56.4			
Hydromodification	39.4	58,712.6		
Industrial	265.7	32,909.9	94.6	
Land Application/Waste Sites/Tanks	44.8			
Legacy/Historical Pollutants	69.0	32,281.9		
Municipal Discharges/Sewage	563.4	12,276.8	7.7	
Natural/Wildlife	12.4			
Other	30.8	50,019.3		
Resource Extraction	351.2	412.5		
Silviculture (Forestry)	4.2			
Spills/Dumping		412.5		
Unknown	91.4	1,435.1		
Unspecified Nonpoint Source		62.6		
Urban-Related Runoff/Stormwater	757.7	22,499.2	426.2	

Figure 1



This map produced by the Department of Environmental Quality (DEQ), Office of Land and Water, Source Water Assessment Program on March 3, 2011.

The source for the layer shown are from ESRI Data & Maps and MDEC.

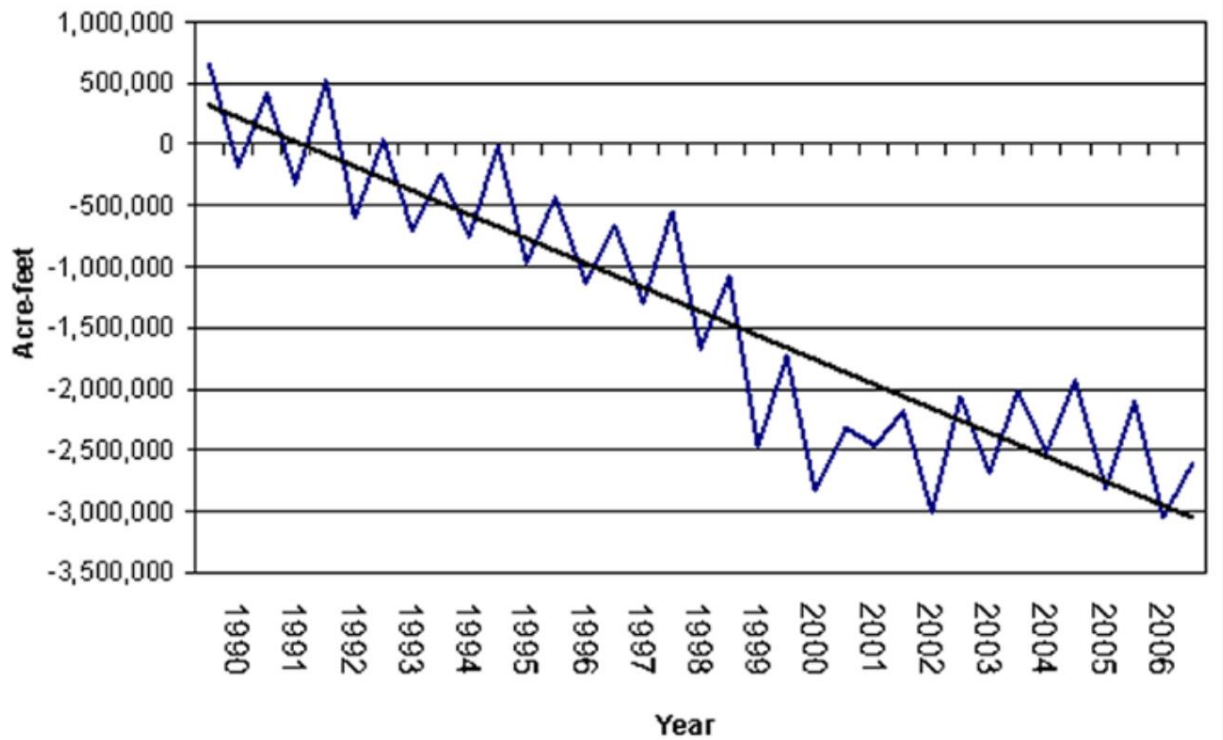
Map Projection: Mississippi Transverse Mercator

The Mississippi Department of Environmental Quality makes no warranties, expressed or implied, as to the accuracy, completeness, ownership, reliability, or suitability for any particular purpose, of the data contained on this map.

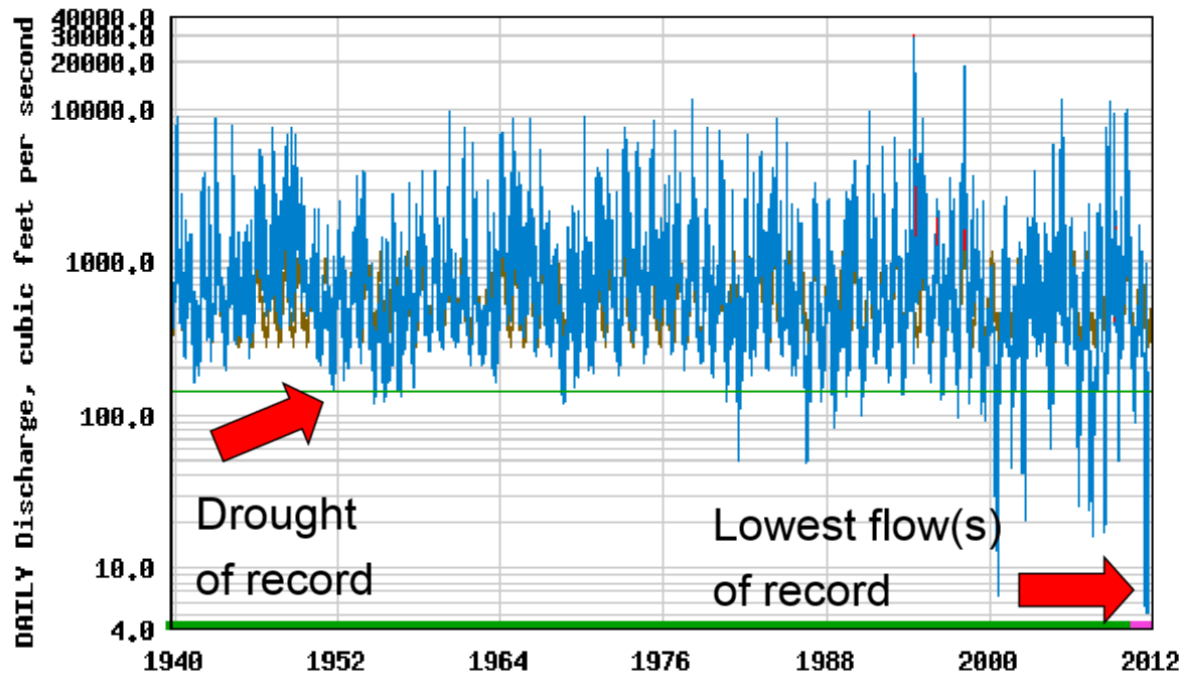
AgChem Sampling Sites



Delta Aquifer Cumulative Seasonal Change



USGS 02353500 ICHAWAYNOCHAWAY CREEK AT MILFORD, GA



- Median daily statistic (73 years)
- Daily mean discharge
- Estimated daily mean discharge
- Period of approved data
- Period of provisional data
- Annual 7Q10

Get Your Bachelors Degree at



Home > Features > Oct 2013

Florida Lawsuit Could Restrict Georgia Irrigation

Allison Floyd, Growing America

Wednesday, October 9th, 2013

Florida has sued Georgia, asking the U.S. Supreme Court to decide whether Georgia is taking too much water from river basins that feed Apalachicola Bay, a decision that could impact how much farmers in the southwest part of Georgia can irrigate.

A lawsuit that Florida filed against Georgia points directly at irrigation wells as one of the culprits behind a shrinking Floridan Aquifer and a decimated oyster industry in Apalachicola Bay.

"These types of cases are more common in the East," said Doug Wilson, the executive director of the Center for Environmental and Estuarine Science. The center, which was created by the U.S. Environmental Protection Agency, has developed policies to guide water use.

Georgia and Florida have fought for decades over water rights in the Apalachicola River Basin. Atlanta, but the new lawsuit is the first time Florida has sued Georgia over water rights.



LEADING GEORGIA'S

